

SPECIFICATION
COMMERCIALY AVAILABLE
 CERAMIC MONOBLOCK
 PART NUMBER: FNP-1314

Also available as SMD
 See CFM-06620068

5/10/13 changed I.L., Attenuation, Input Power & SMA to N connectors
 5/15/13 changed Fo, BW & Stop Band.

ISSUED / REVISION	ENGINEER APPROVED	DOCUMENT CHECKED	DRAFTSMAN
5/3/13 ^(kn)			
5/10/13 ^(kn)			
5/15/13 ^(kn)	05/29/2013 TFG	05/29/2013 GL	05/29/2013 GL

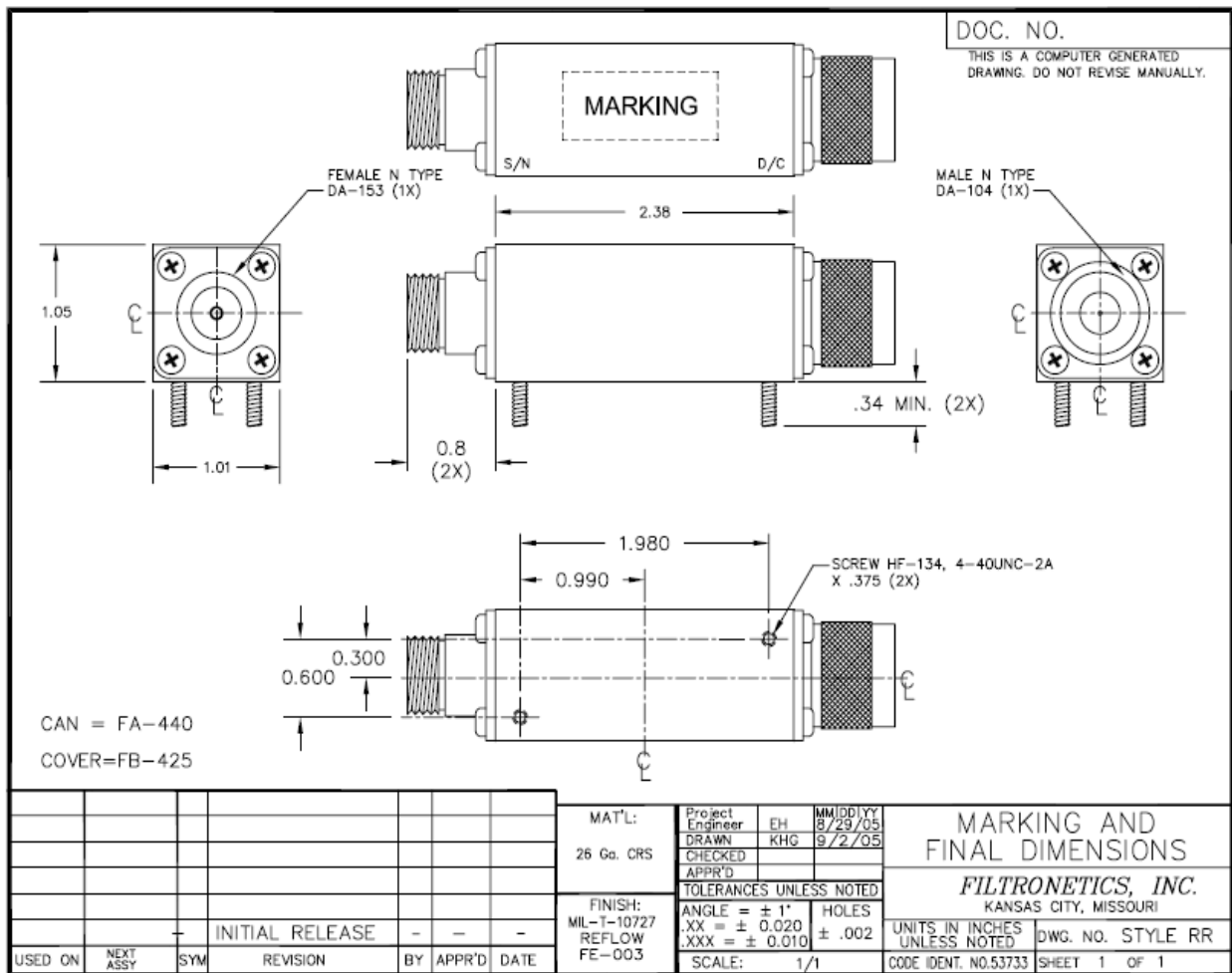
FILTRONETICS Inc

1. Part Number: FNP-1314

2. Electrical Specifications:

No.	Parameter	Unit	Specification
1	Center Frequency	MHz	662
2	Bandwidth	MHz	$F_c \pm 3.0$ (659 ~ 665MHz)
3	Insertion Loss in BW	dB	3.5 max.
4	Ripple in BW	dB	1.0 max.
5	Return Loss in BW	dB	15.0 min.
6	Attenuation	dB	40 min. @ 648MHz
			40 min. @ 676MHz
7	Input Power	Watt	2.0 max.
8	IN/OUT Impedance	Ω	50
9	Operating Temp. Range	$^{\circ}\text{C}$	-40 ~ +85

3. Mechanical Package Style: RR



4. Simulation:

