

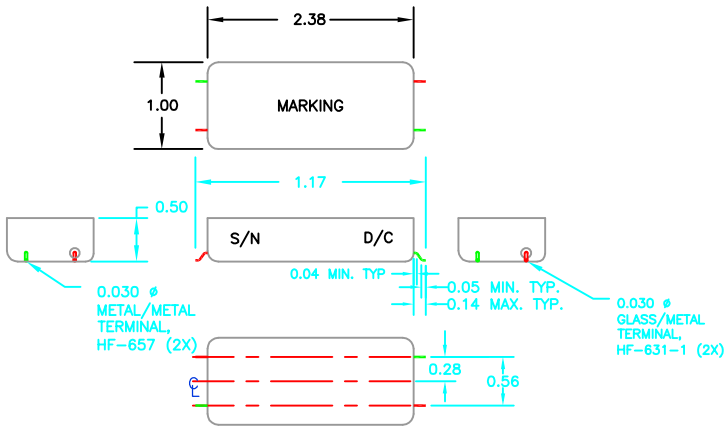
Filter Type
 Center Frequency (Fo)
 Band Width:
 Insertion Loss in BW:
 Return Loss in BW:
 Ripple BW:
 Attenuation: 550 MHz
 1400 MHz
 Input Power
 Operating Temperature
 Workmanship:
 RoHS COMPLIANT

LC Band Pass
 975 MHz
 715-1235 MHz
 2.0 dB Max
 -15 dB Min
 1.0 dB Max
 60 dB Min
 60 dB Min
 1.0 W
 -40 to +85°
 J-STD-001
 NO

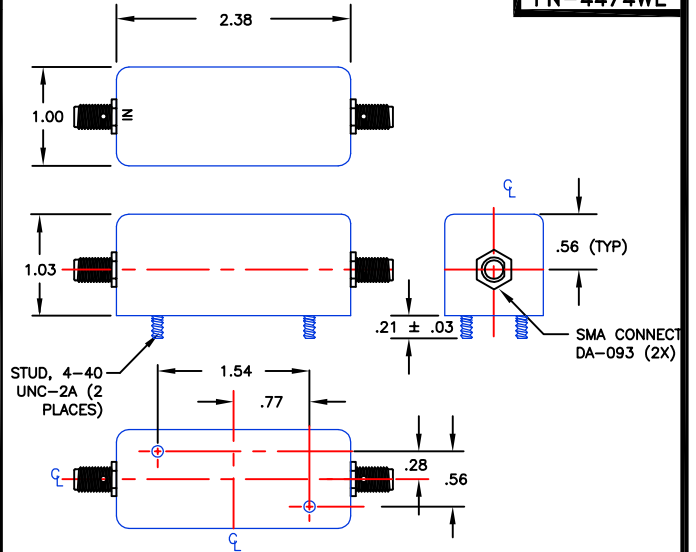
Customer Installation Temp.
 Surface Mount Parts If SMT:
 High Temperature Solder is
 Required to assemble this
 device.

Customer Installation temp.
 range specification NA.

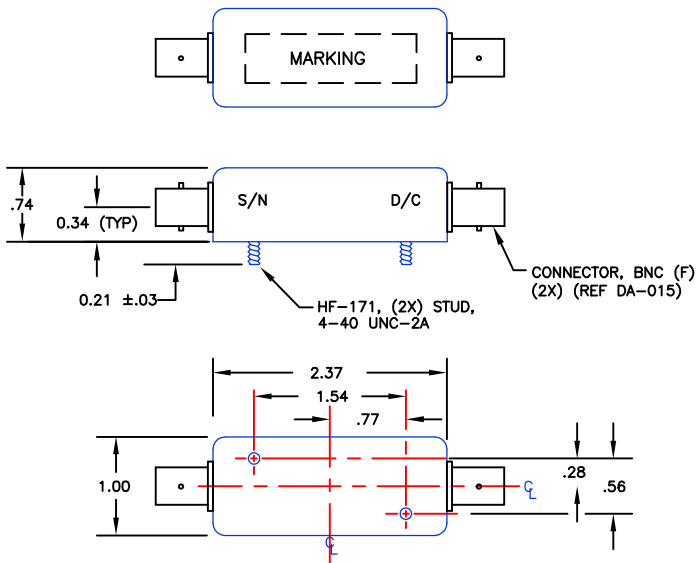
FN-4474W



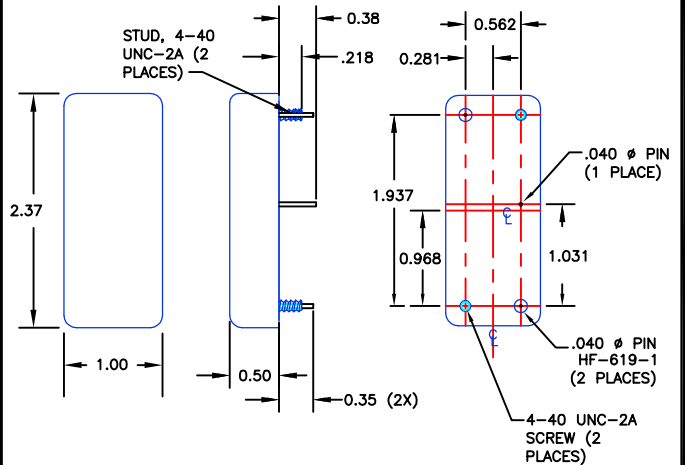
FN-4474WE



FN-4474WK



FN-4474WG



FN-4474W

FILTRONETICS, INC.

6010 PARRETTA DR. KANSAS CITY, MO
 64120 816-231-7375 FAX 816-241-0368
 WWW.FILTRO.NET